

1. Placement of the cabinet.
2. The cabinet is mounted on the wall or on a stand.
3. Connection to mains. 230 V charge must be safeguarded by means of a HPFI circuit breaker.
4. Data sheet.
5. Maintenance / cleaning.

1. Recommended installation height (see illustration)

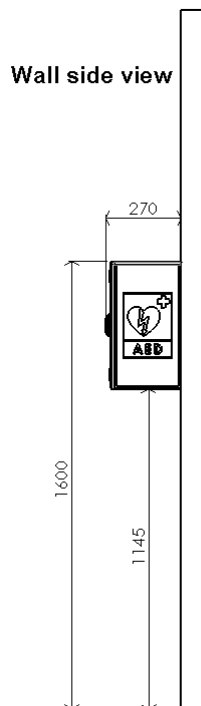
The cabinet is designed to be able to be mounted under all normal condition.

In order to allow for maintenance, it will always be an advantage to hang the defibrillator cabinet in a place in which it receives the minimum possible amount of direct sunlight.

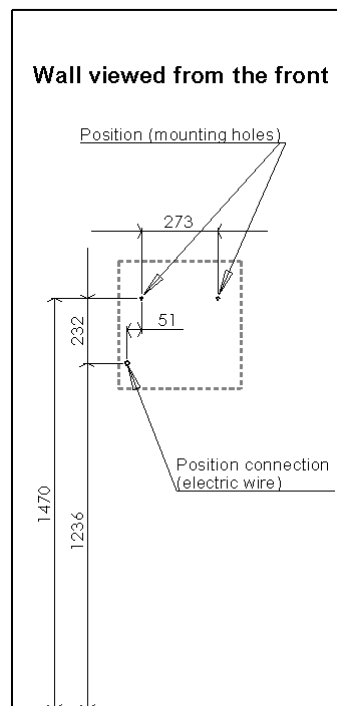
If the cabinet is mounted under an outdoor roof where the cabinet is not washed naturally by the elements (*rainwater*), it is recommended that the cabinet is washed regularly in order to prevent the build up of deposits.

| | |
|-----------------------|---|
| Environment: | For indoor and outdoor use |
| Protection class: | IP 43 – can withstand heavy rain, but must not be hosed on. |
| Altitude: | can be used at altitudes of up to 2000 m |
| Temperatures: | -40 to +40 °C. |
| Relative humidity: | 0 – 80 % |
| Overvoltage category: | Cat II |
| Pollution class: | Class 2 |

Wall side view



Wall viewed from the front



2. The Cabinet should be mounted onto the wall or stand with screws attached through the 2 holes in the back panel.

(The wall must be flat and stable. THE CABINET MUST NOT BE TILTED)



3. ELECTRICAL INSTALLATION MUST BE CARRIED OUT BY A QUALIFIED ELECTRICIAN

The cabinet must be supplied with 230 V.
We recommend that electricity is supplied from a closed electrical circuit.

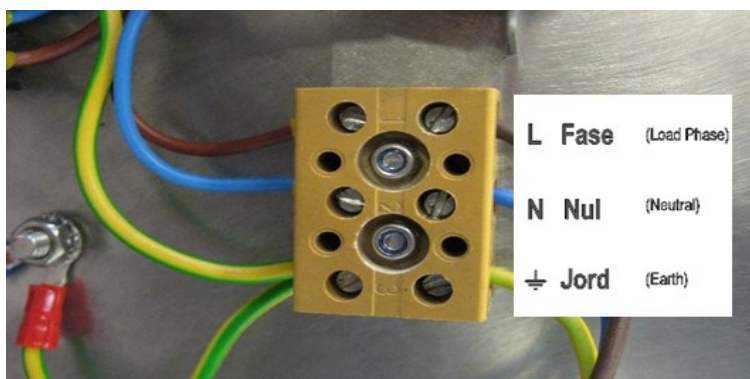
A PG M16 and a blind plug can be mounted to the back or the base of the cabinet.



Remove the 2 Allen screws on the cover plate (mounted with LED lights) and swing the sheet out.

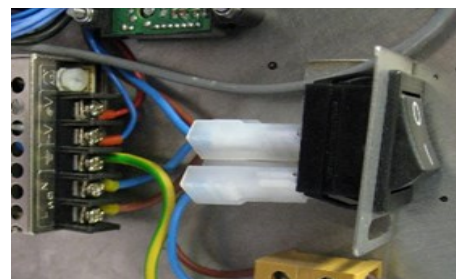
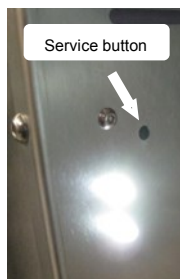


There will now be free access to the section of the unit where phase, neutral and ground wires are to be connected.



When carrying out maintenance of the unit, disconnect the siren. Use the Allen key to press the maintenance button once.

Open the cover plate (mounted with LED lights) and swing the sheet out. Then disconnect the circuit from the mains, and flip the toggle switch.



4. Data sheet:

The electrical connection MUST be protected by an HFI residual current relay – 30mA.
Voltage connection level 230VAC. 50Hz. Max. fuse 10A. (Phase, Zero and Earth)

Outdoor cable, 3 x 1.5 mm² Power consumption during normal operation = 40 mA / 10.2 W
Max. power consumption incl. heater = 500 mA / 116 W

5. Maintenance/cleaning:

We recommend cleaning the outer surface of the cabinet at least 1-2 times per year.

Wipe using detergent and a damp cloth or brush and rinse with clean water. Finally wipe down the cabinet with a dry cloth.

If the surface of the cabinet becomes tarnished, this will be due to deposits which can easily be cleaned off.

For difficult deposits, use a scouring pad. **Never use wire wool.**